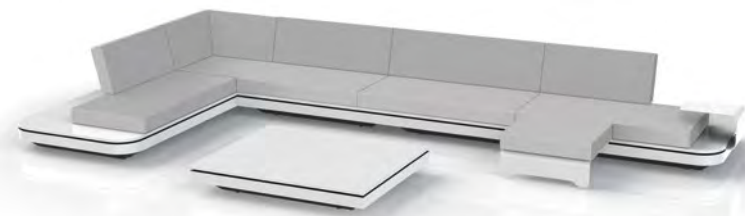
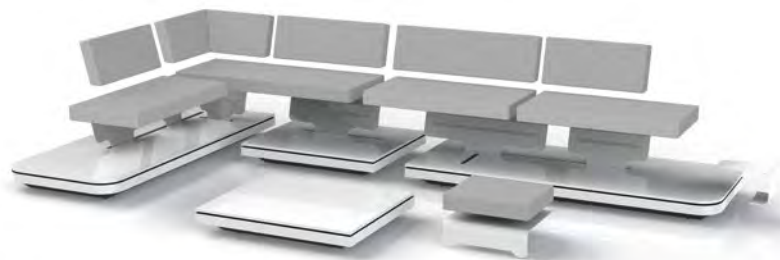


# ELEMENTS



Enticing forms and alluring architecture are the core concepts of the Elements collection. This creation by designer **Gerd Couckhuys** is an ultra-modular outdoor seating island with endless arrangement options. Movable back positions, accessories such as a footrest and an occasional table sliding in a slot, make this island the epitome of serenity and relaxation. A slender strip of illuminating LED lights allows the Elements to hover. The combination of subdued colours and durable materials such as Quaryl® of Villeroy & Boch with a soft touch gives the arrangement a certain prestige, offering the ultimate in seating comfort. Elements was awarded a **Red Dot Award in 2014**.



The backrests of the Elements collection are equipped with magnetic cushion holder strips to hold the cushions in place. The magnets in the cushions are invisible and ensure a better fixation to the backrests in any position. The (re)movable, adjustable backrests of Elements can be placed in two positions.

# TECHNICAL SPECIFICATIONS ELEMENTS COLLECTION

## BASE



PCA black  
col. F7

## FRAME



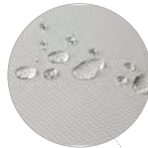
PCA white  
col. F8

## TOP PLATE



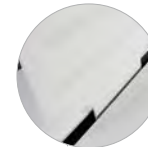
Quarryl®  
by Villeroy&Boch®

rounded corners for  
left and right end  
seat 280



cushions with nautic  
finishing

2 magnetic strips  
for back cushions



(re)movable  
back panels



360° slot for additional  
sliding accessories



(re)movable  
sliding sidetable



360° LED-lighting  
(15 hours after one charge)



remote control + battery  
for LED-lighting



(re)movable sliding  
footstool/sidetable

## SPECIAL FEATURES



modular system



reclining back 30°

## OPTIONS



remote controlled  
LED-lighting



protective cover

## AVAILABLE CUSHIONS



Nautic lotus  
Coal black  
col.30



Nautic lotus  
White grey  
col.31



Nautic lotus  
grey quartz  
col.32



Nautic Sunbrella®  
ally beige  
col.45



Nautic leather  
white  
col.33



Nautic leather  
brown  
col.34



Nautic leather  
blue  
col.35

## TECHNICAL SPECIFICATIONS ELEMENTS COLLECTION



**LEFT END SEAT 280**  
FS-EELS



**FOOTREST 70**  
FS-ESFR



**BACK PANELS**  
FS-BR121  
FS-BR97  
FS-BR73



**RIGHT END SEAT 280**  
FS-ESRS



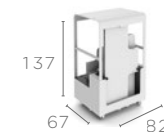
**SIDETABLE 35**  
FS-ESST



**CORNER BACK PANELS**  
FS-BRCO



**CORNER SEAT 140**  
FS-ESCS



**TROLLEY FOR BACK RESTS+ ACCESSORIES**  
FS-TY01



**SEAT CUSHIONS**  
SC-187 / SC-140 / SC-117  
SC-93 / SC-FL140  
SC-FL117 / SCFR70



**LARGE MIDDLE SEAT 140**  
FS-ESMSL

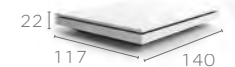


**CUSHION BOX**  
FS-FECBL  
INNER DIMENSIONS  
81 x 202 x 83



140x40 / 117x40 / 93x40  
84,5x40 - 72,5x40

**MAGNETIC BACK CUSHIONS (LONG DECO INCL.)**  
BC-140 / BC-117  
BC-93 / BC-CO



**LARGE FOOTSTOOL/ COFFEE TABLE 140**  
FS-ESFL



48x32x12

**ARM CUSHION**  
ARM48

### A FEW ELEMENTS CONCEPTS

FOR MORE INFORMATION AND POINTS OF SALE, VISIT [WWW.MANUTTI.COM](http://WWW.MANUTTI.COM)

